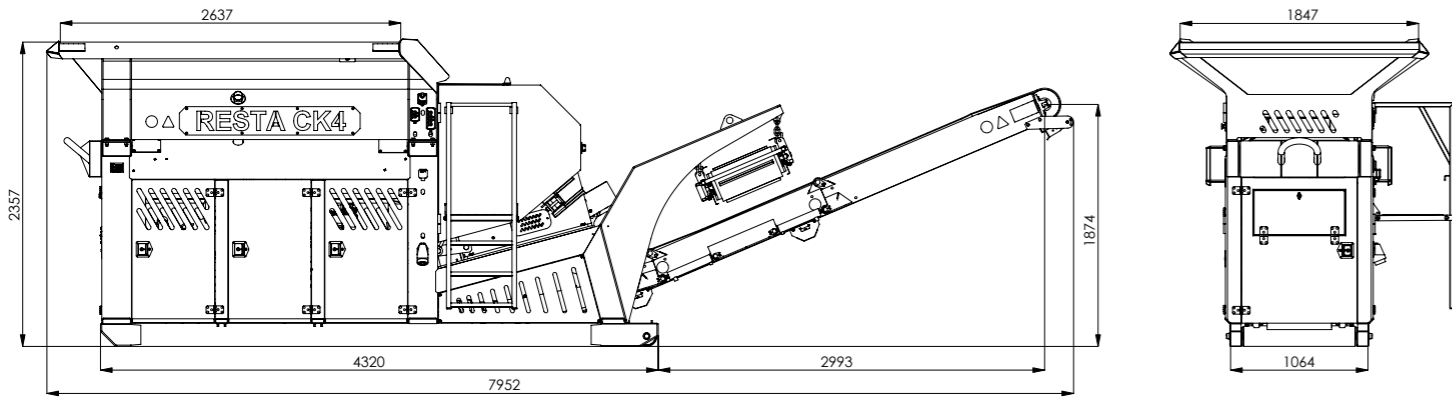


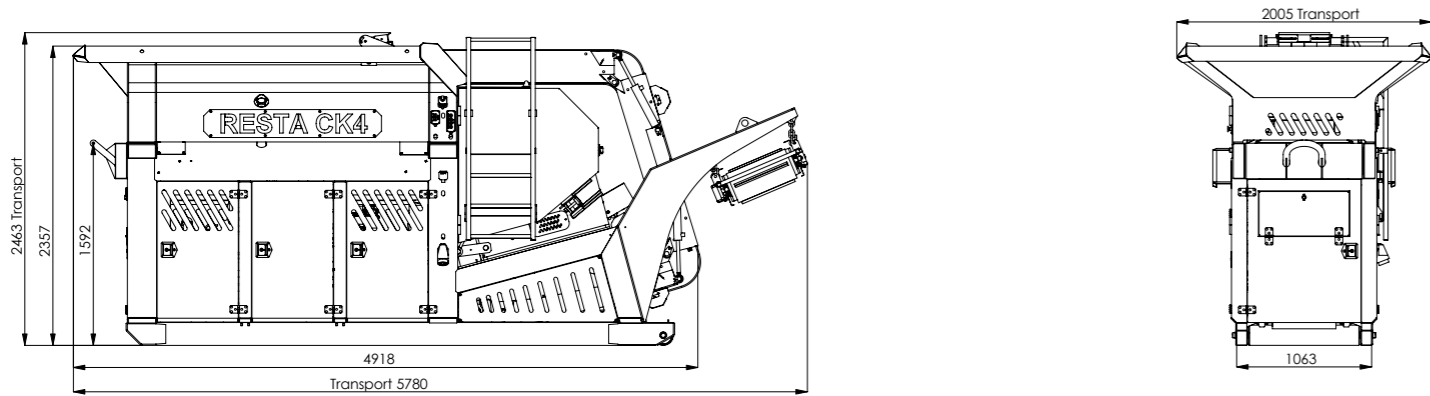
# VERSION



## Working position



## Transport position



**RESTA CK4 470x330**  
Container jaw crusher

- Jaw crusher
- Plug in
- Scale
- Eco-friendly
- Lighting
- Diesel electric
- Magnetic separator
- Scalping
- Dust suppression
- Horn

## RESTA s.r.o

### Contact:

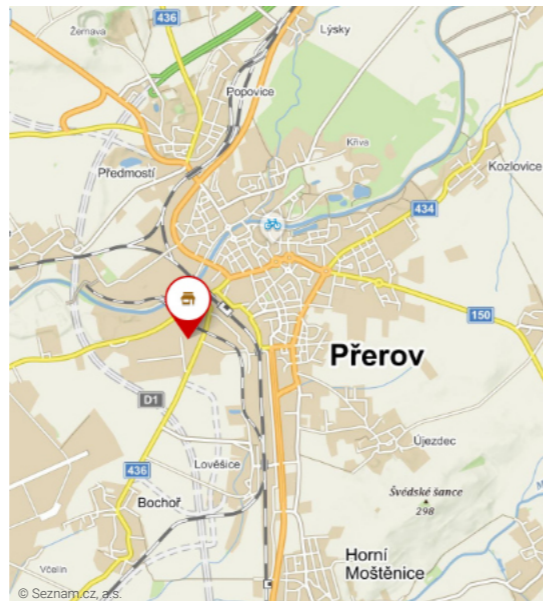
Kojetínská 3120/75  
750 02 Přerov  
Czech Republic

+420 581 741 811  
Fax +420 581 299 958  
resta@resta.cz

### Company identification:

CRN: 14616807  
TIN: CZ14616807

GPS: 49.4435458 N, 17.4361281 E



<b>Max. feed size</b>	max. 400 x 300 mm
<b>Final product</b>	0-32 mm, 0-90 mm (according to crusher setting)
<b>Throughput</b>	10-30 t/h
<b>Hopper</b>	2 m <sup>3</sup>
<b>Weight</b>	6.1 t

### DESIGNED FOR:

- reinforced concrete
- concrete
- construction waste
- natural aggregate up to 150 MPa

[www.resta.cz](http://www.resta.cz)



RESTA s.r.o.  
CRN: 14616807  
TIN: CZ 14616807

Kojetínská 3120/75  
750 02 Přerov  
Czech Republic

resta@resta.cz  
+420 581 741 811

[www.resta.cz](http://www.resta.cz)

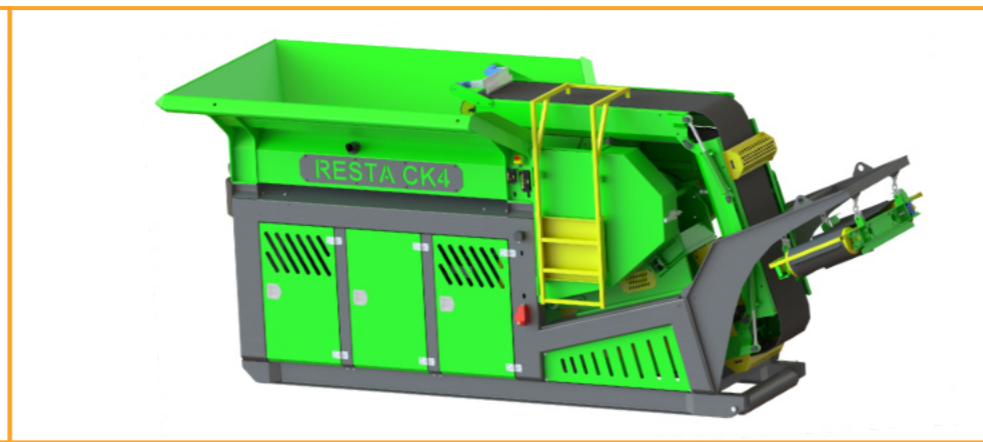


RESTA s.r.o.  
CRN: 14616807  
TIN: CZ 14616807

Kojetínská 3120/75  
750 02 Přerov  
Czech Republic

resta@resta.cz  
+420 581 741 811

[www.resta.cz](http://www.resta.cz)

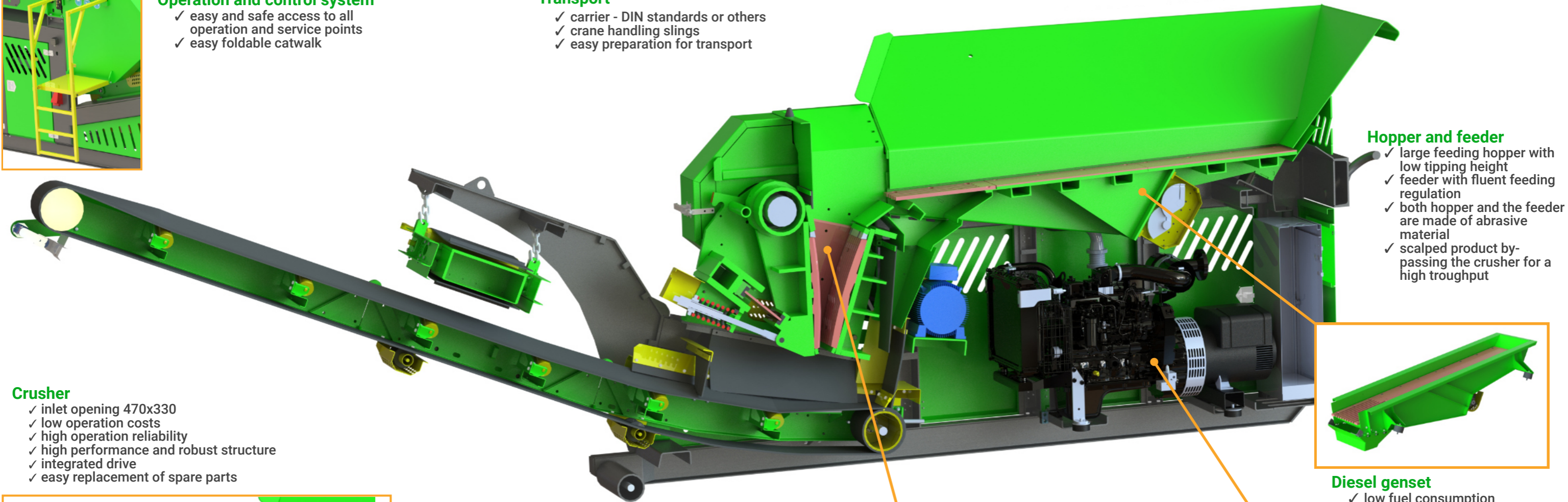


**Operation and control system**

- ✓ easy and safe access to all operation and service points
- ✓ easy foldable catwalk

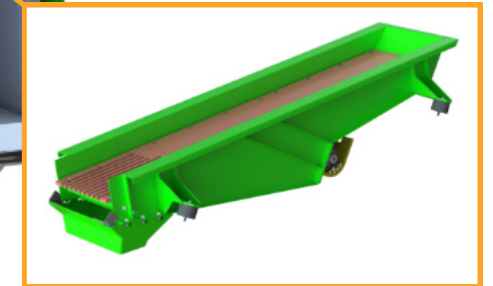
**Transport**

- ✓ carrier - DIN standards or others
- ✓ crane handling slings
- ✓ easy preparation for transport



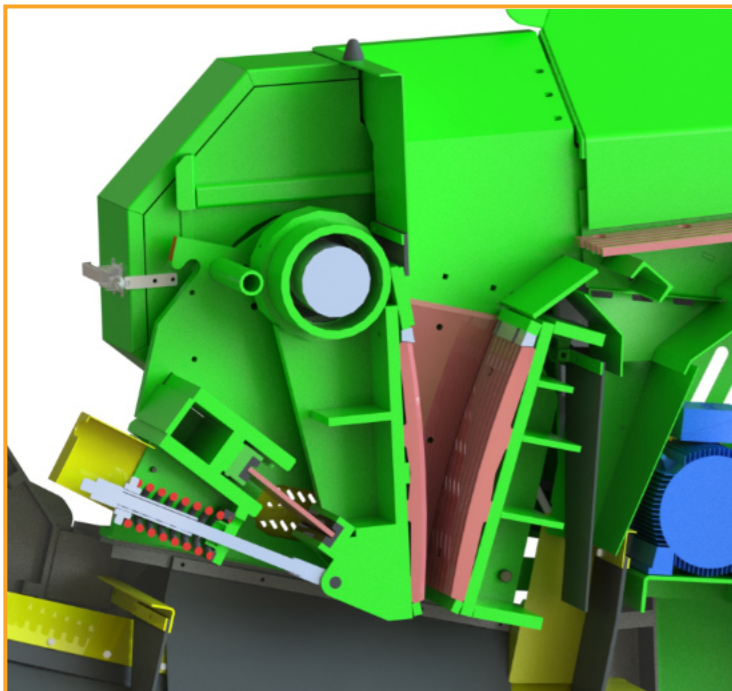
**Hopper and feeder**

- ✓ large feeding hopper with low tipping height
- ✓ feeder with fluent feeding regulation
- ✓ both hopper and the feeder are made of abrasive material
- ✓ scalped product by-passing the crusher for a high troughput



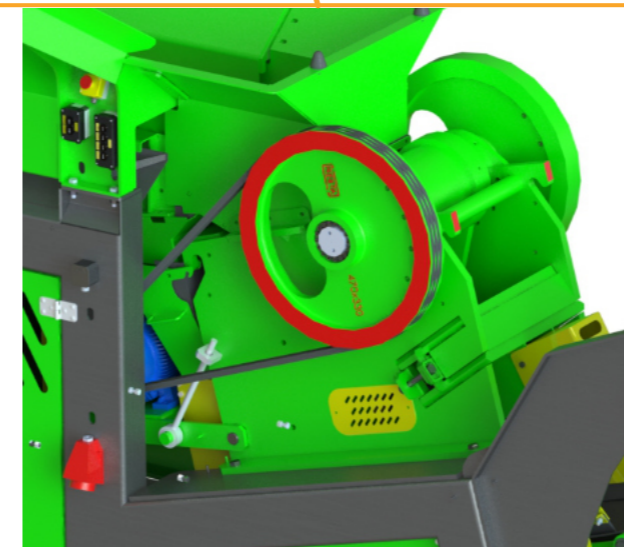
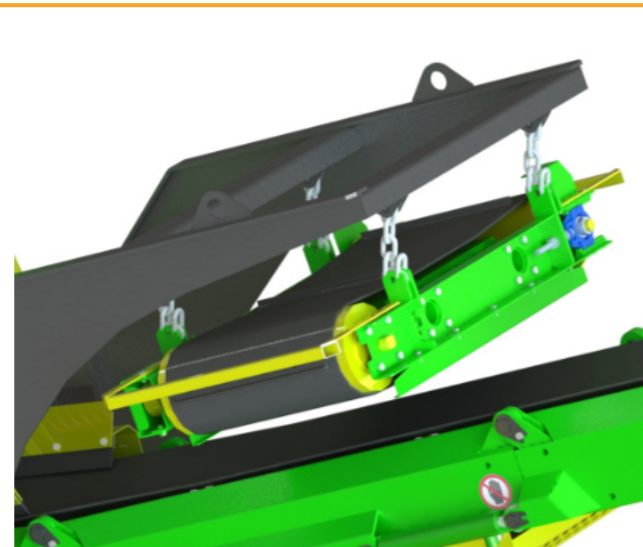
**Crusher**

- ✓ inlet opening 470x330
- ✓ low operation costs
- ✓ high operation reliability
- ✓ high performance and robust structure
- ✓ integrated drive
- ✓ easy replacement of spare parts



**Magnetic separator**

- ✓ separation of magnetic pieces from the material
- ✓ adjustable overbelt height



**Diesel genset**

- ✓ low fuel consumption
- ✓ option to use external power supply
- ✓ double sealing of switchboard
- ✓ user-friendly

